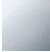

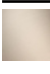




ST 010 101 3705



- 160mm projection
- fixed spout
- rectangular spray pattern with 40 individual jets
- height of mixer 108 mm
- height up to aerator 94 mm
- hole diameter valve 32 mm
- hole diameter spout 35 mm
- 2x screw-in M 10 x 1 pressure hose, leak-tested
- max. flow 4 l/min
- handle Ø 60mm
- lead-free
- This product can help a building meet the requirements of Green Building Rating Systems, e.g. LEED®, BREEAM®, DGNB

|  |                               |                    |
|--|-------------------------------|--------------------|
|  | Chrome                        | ST 010 101 3705-00 |
|  | Brushed Platinum              | ST 010 101 3705-06 |
|  | Brushed Champagne (22kt Gold) | ST 010 101 3705-46 |
|  | Champagne (22kt Gold)         | ST 010 101 3705-47 |
|  | Brushed Dark Platinum         | ST 010 101 3705-99 |

**Individual components of this set**

You need the following components for this set

1x 13 714 705-00



1x 20 000 740-00



1x 20 000 741-00


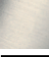



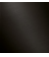




ST 010 101 3705

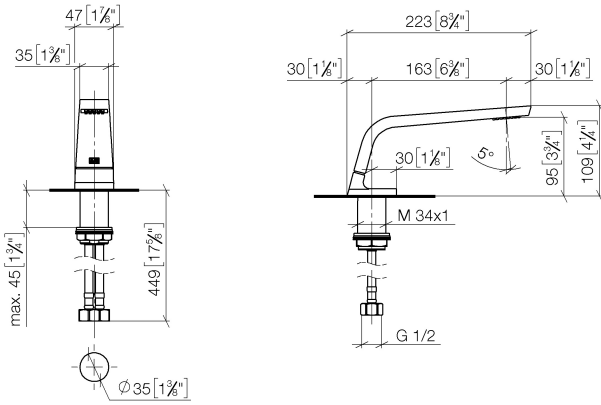


- 160mm projection
- fixed spout
- rectangular spray pattern with 40 individual jets
- height of mixer 108 mm
- height up to aerator 94 mm
- hole diameter 35 mm
- 2x screw-in M 10 x 1 pressure hose, leak-tested
- 1/2" connection
- max. flow 4 l/min
- lead-free
- This product can help a building meet the requirements of Green Building Rating Systems, e.g. LEED®, BREEAM®, DGNB

|  |                               |               |
|--|-------------------------------|---------------|
|  | Chrome                        | 13 714 705-00 |
|  | Brushed Platinum              | 13 714 705-06 |
|  | Dark Chrome                   | 13 714 705-19 |
|  | Brushed Champagne (22kt Gold) | 13 714 705-46 |
|  | Champagne (22kt Gold)         | 13 714 705-47 |
|  | Brushed Dark Platinum         | 13 714 705-99 |

ST 010 101 3705

mm [inches]



**Flow rate chart**

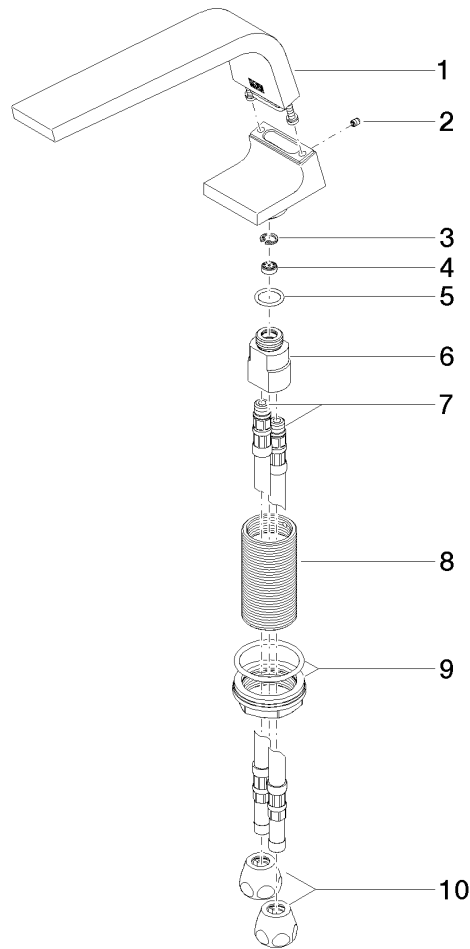


**Certificates**

GDV\_0400279.      LGA\_28686.      IAPMO\_N-4976.      IAPMO\_8834 (1).      IAPMO\_4976 (6).

WRAS\_1512011.      IAPMO\_6397.

ST 010 101 3705



**Spare parts list**

| No. | Item Number        | Name               | Quantity used | Delivery time |
|-----|--------------------|--------------------|---------------|---------------|
| 1   | 90 11 70 002 00-00 | spout              | 1             | 10            |
| 2   | 09 31 11 044 90    | pin                | 1             | 2             |
| 3   | 09 16 01 016 90    | ring               | 1             | 2             |
| 4   | 09 23 01 034 90    | flow reducer       | 1             | 2             |
| 5   | 09 14 10 130 90    | seal               | 1             | 2             |
| 6   | 09 11 10 055 10 90 | connection         | 1             | 2             |
| 7   | 04 30 04 016 00 90 | hose               | 2             | 60            |
| 8   | 09 30 01 208 90    | connection         | 1             | 2             |
| 9   | 04 23 10 044 06 90 | fixing set         | 1             | 2             |
| 10  | 90 23 30 040 00-00 | threaded connector | 2             | 10            |

ST 010 101 3705

- hole diameter 32 mm
- handle Ø 60mm
- without rosette
- with cold marking



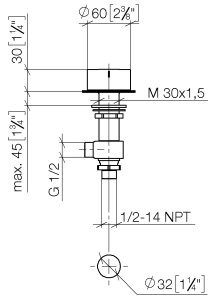
Fits: CL.1, CYO

|  |                                     |               |
|--|-------------------------------------|---------------|
|  | Chrome                              | 20 000 740-00 |
|  | Brushed Platinum                    | 20 000 740-06 |
|  | Platinum                            | 20 000 740-08 |
|  | Dark Chrome                         | 20 000 740-19 |
|  | Brushed Durabronze<br>(23kt Gold)   | 20 000 740-28 |
|  | Matte Black                         | 20 000 740-33 |
|  | Brushed<br>Champagne (22kt<br>Gold) | 20 000 740-46 |
|  | Champagne (22kt<br>Gold)            | 20 000 740-47 |
|  | Brushed Dark<br>Platinum            | 20 000 740-99 |

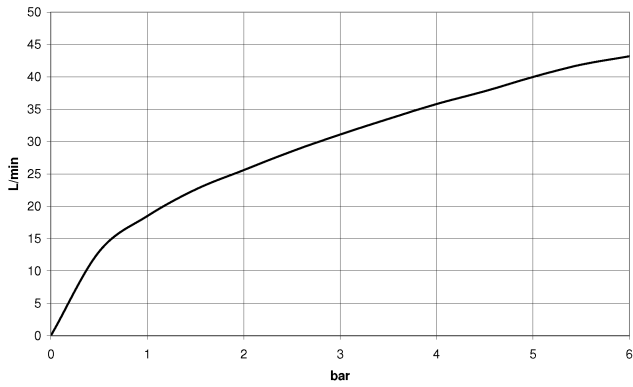


ST 010 101 3705

mm [inches]



Flow rate chart

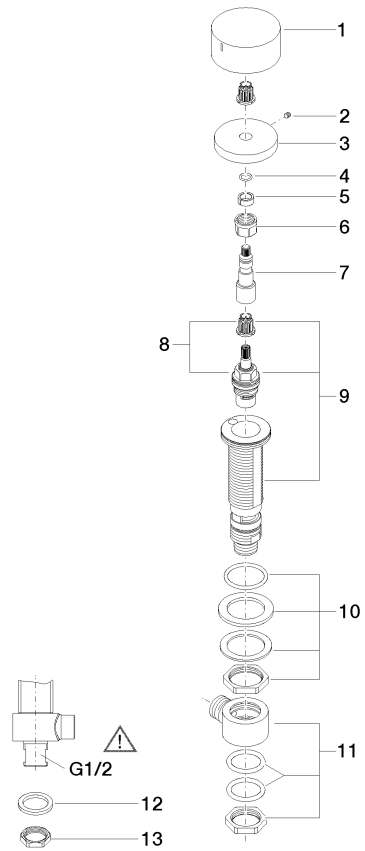


Certificates

IAPMO\_4976 (5). WRAS\_2103001. LGA\_28688.



ST 010 101 3705



**Spare parts list**


| No. | Item Number        | Name            | Quantity used | Delivery time |
|-----|--------------------|-----------------|---------------|---------------|
| 1   | 09 20 74 005-00    | handle ( cold ) | 1             | 10            |
| 2   | 90 31 11 007 00 90 | pin             | 1             | 2             |
| 3   | 09 27 74 003-00    | rosette         | 1             | 10            |
| 4   | 90 14 10 060 00 90 | seal            | 1             | 2             |
| 5   | 90 14 15 020 03 90 | ring            | 1             | 2             |
| 6   | 90 23 30 023 00 90 | nut             | 1             | 2             |
| 7   | 09 29 06 107-00    | spindle         | 1             | 10            |
| 8   | 90 90 03 133 00 90 | top             | 1             | 2             |
| 9   | 04 17 11 058 33 90 | side panel      | 1             | 2             |
| 10  | 04 23 10 032 78 90 | fixing set      | 1             | 2             |
| 11  | 04 17 11 023 10 90 | distributor     | 1             | 2             |
| 12  | 09 30 11 059 90    | disc            | 1             | 2             |
| 13  | 09 23 10 012 90    | nut             | 1             | 2             |

ST 010 101 3705

- hole diameter 32 mm
- handle Ø 60mm
- without rosette
- with hot marking



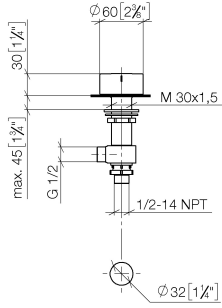
Fits: CL.1, CYO

|  |                                     |               |
|--|-------------------------------------|---------------|
|  | Chrome                              | 20 000 741-00 |
|  | Brushed Platinum                    | 20 000 741-06 |
|  | Dark Chrome                         | 20 000 741-19 |
|  | Brushed Durabronze<br>(23kt Gold)   | 20 000 741-28 |
|  | Matte Black                         | 20 000 741-33 |
|  | Brushed<br>Champagne (22kt<br>Gold) | 20 000 741-46 |
|  | Champagne (22kt<br>Gold)            | 20 000 741-47 |
|  | Brushed Dark<br>Platinum            | 20 000 741-99 |

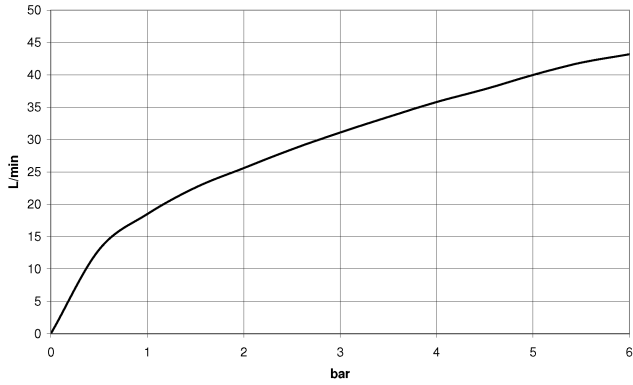


ST 010 101 3705

mm [inches]



**Flow rate chart**

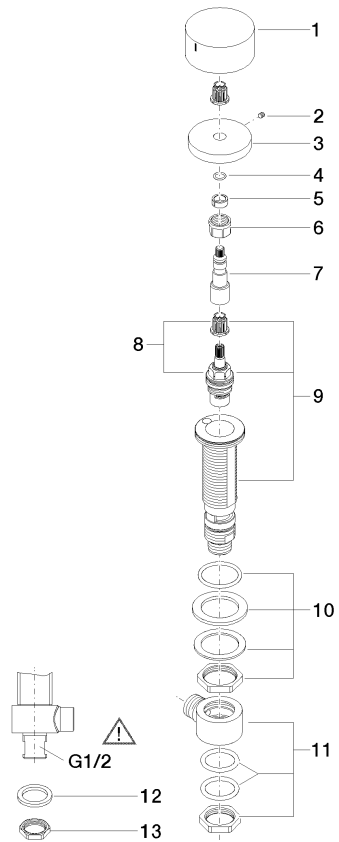


**Certificates**

IAPMO\_4976 (5). WRAS\_2103001. LGA\_28688.

ST 010 101 3705

Parts for other finishes can be found here: Brushed Platinum



**Spare parts list**

| No. | Item Number        | Name           | Quantity used | Delivery time |
|-----|--------------------|----------------|---------------|---------------|
| 1   | 09 20 74 006-00    | handle ( hot ) | 1             | 10            |
| 2   | 90 31 11 007 00 90 | pin            | 1             | 2             |
| 3   | 09 27 74 003-00    | rosette        | 1             | 10            |
| 4   | 90 14 10 060 00 90 | seal           | 1             | 2             |
| 5   | 90 14 15 020 03 90 | ring           | 1             | 2             |
| 6   | 90 23 30 023 00 90 | nut            | 1             | 2             |
| 7   | 09 29 06 107-00    | spindle        | 1             | 10            |
| 8   | 90 90 03 132 00 90 | top            | 1             | 2             |
| 9   | 04 17 11 058 32 90 | side panel     | 1             | 2             |
| 10  | 04 23 10 032 78 90 | fixing set     | 1             | 2             |
| 11  | 04 17 11 023 10 90 | distributor    | 1             | 2             |
| 12  | 09 30 11 059 90    | disc           | 1             | 2             |
| 13  | 09 23 10 012 90    | nut            | 1             | 2             |